

WINDOWS 11 PRO & INTEL: YOUR STRATEGIC UPGRADE PATH



A Last Minute Action Guide to Windows 10 EOS

Windows 10 EOS is banging on your door – stop pretending you’re not home. We get it – other priorities took precedence, and you’re daunted by the potential costs and workforce disruption from necessary hardware upgrades. But the closer you push the migration to October 14, 2025 (the EOS deadline), the more your business might end up playing an inefficient and risky game of catch-up.

Sure, it would have been better to tackle your migration sooner – but now is the second-best time to act. This quick action guide will reiterate why this transition is crucial, highlight the benefits of AI-powered Intel PCs running Windows 11 Pro in boosting workforce productivity, and explain how we can assist in making the transition seamless for your enterprise.



Understand the Urgency: Why Windows 10 EOS Matters for Your Business

Do you really want to gamble with your business’s IT infrastructure?

After October 2025, Windows 10 systems will become blind spots in your IT environment. Without security patches or compliance updates, every device running Windows 10 becomes a growing liability: a magnet for zero-day exploits, a gap in endpoint visibility, and a red flag in regulatory audits. These unsupported machines provide entry points for bad actors to exploit lateral movement. It’s more than just falling behind – it’s exposing your entire infrastructure to risks you can’t afford.

Windows 11 Pro, paired with Intel Core Ultra processors, enables faster, smarter, and more secure computing through built-in AI acceleration, hardware-based threat detection, and enhanced manageability. These AI PCs help automate workflows, reduce IT overhead, and protect against modern cyber threats with real-time defense mechanisms.

Instead of a costly, reactive migration, you get a future-ready infrastructure that improves employee productivity, strengthens endpoint security, and positions your organization for scalable growth, while reducing long-term device and energy costs.

Quick Facts and Considerations:

- *30 to 40% of systems may still be running Windows 10 when they reach EOS*
- *Many third-party applications will phase out support for Windows 10, leading to compatibility issues and operational disruptions*
- *Cyber insurance costs may increase for companies running outdated operating systems, as insurers assess security posture before issuing policies*

Transitioning to Windows 11 Pro AI PCs powered by Intel transforms a necessary hardware upgrade into a strategic advantage.

The AI Advantage: Enhancing Windows 11 Pro With Intel Core Ultra Processors

What's the big deal about AI-enabled Intel Core Ultra processors?

Turn a compliance-driven upgrade into an opportunity to enhance your workforce productivity, security, and operational efficiency with AI-enabled capabilities. Leveraging Intel Core Ultra processors alongside Windows 11 Pro empowers your business for an AI-centered future. By integrating AI at both the hardware and software levels, organizations can optimize process and drive innovation, maintaining a strong competitive edge.

Intel Core Ultra chips redefine what PCs can do. Designed for AI at the edge, their integrated CPU, GPU, and Neural Processing Unit (NPU) enable real-time AI capabilities directly on the device — no need to rely solely on the cloud. This accelerates workforce productivity with [65% faster generative AI performance](#) compared to previous generations.

With this, employees benefit from:

- Faster AI-assisted workflows
- Improved video calls
- Enhanced collaborative and creative output

This means higher productivity without overloading your network or cloud budget.

Imagine tasks like data analysis, content creation, and process automation happening in record time. With AI at the core of your systems, your team can achieve more with less effort, setting a new benchmark for productivity.

Quick Facts and Considerations:

- [Businesses using Intel AI PCs report up to 213% ROI over three years, with 90% fewer hardware-related onsite visits](#)
- AI PCs are optimized for next-gen AI workloads, ensuring businesses stay competitive in an AI-driven world

"The strength of our [AI PC product innovation](#), combined with the breadth and scale of our hardware and software ecosystem across all segments of the market, is empowering users with a better experience in the traditional ways we use PCs for productivity, creation and communication, while opening up completely new capabilities..."

— Michelle Johnston Holthaus, CEO of Intel Products

65%

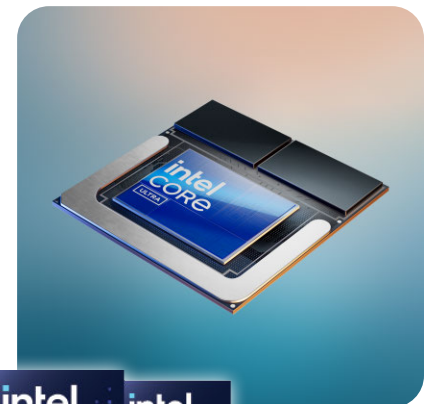
Faster Gen AI Performance

213%

Three Year ROI

90%

Fewer Hardware-related Onsite Visits



Security and Savings: Reduce IT Costs, Improve Efficiency and Protect Your Business

In terms of security, is what you have right now “good enough?”

Cyberthreats are evolving fast — and so is protection. Intel Core Ultra processors work with Windows 11 Pro to deliver hardware-level, AI-powered threat detection that reduces risk and minimizes IT firefighting.

Windows 11 Pro complements Intel's AI-driven architecture by offering enhanced security features and seamless integration with cloud-based services. The operating system's Zero Trust security model, combined with Intel vPro technology, provides businesses with robust protection against cyber threats. This combination of hardware and software ensures that sensitive business data remains secure while enabling employees to work efficiently.

It's protection that works behind the scenes, without slowing down users with key features that include:

- [Intel Hardware Shield for a 70% smaller attack surface](#)
- Real-time ransomware and malware detection
- Out-of-the-box compliance support for regulated industries

Quick Facts and Considerations:

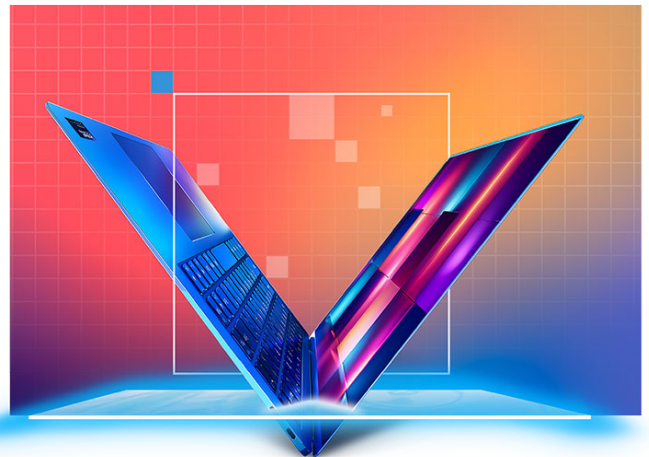
- *Businesses using Windows 11 Pro report a [58% drop in security incidents](#) compared to Windows 10*
- *Enhanced security architectures create a [20% lower risk of successful cyberattacks](#)*
- *Microsoft offers paid Extended Security Updates (ESU), but these are only a temporary solution*

Beyond security, Intel Core Ultra processors improve overall system performance, allowing businesses to handle demanding applications with ease. AI-powered automation, enabled by these processors, streamlines repetitive tasks, freeing up employees to focus on strategic initiatives.

70%
Smaller Attack
Surface

58%
Drop in Security
Incidents

20%
Lower Risk of
Successful
Cyberattacks



What's the cost to value ratio? Are we really going to save that much?

Upgrading to Windows 11 Pro and Intel-powered AI PCs offers businesses substantial cost savings, making it an essential investment for IT efficiency and long-term financial stability. Companies that continue running Windows 10 beyond its end-of-support risk increased operational costs, security vulnerabilities, and productivity losses — all of which directly impact their bottom line.

One of the most significant financial advantages of transitioning to Windows 11 Pro is reduced IT management costs. With cloud-based automation tools like Windows Update for Business, organizations can streamline device updates, minimize manual intervention, and cut down on IT labor expenses.

Pairing this with Intel's vPro® technology, businesses can take advantage of hardware-based security and remote management, leading to fewer costly onsite IT visits — a move that has already reduced support-related expenses by up to 90% for companies adopting Intel AI-powered PCs.

Ultimately, moving to Windows 11 Pro and Intel-powered AI PCs is more than just a technical upgrade — it's a cost-saving strategy that enhances security, reduces IT overhead, and improves the employee experience.

Quick Facts and Considerations:

- [*Cloud-based management reduces IT overhead*](#): Windows 11 Pro's automated update tools streamline device management, cutting down on manual IT labor costs
- Companies investing in AI-powered PCs benefit from [*faster processing speeds and improved battery life, reducing long-term operational expenses*](#)
- Organizations implementing Intel-powered devices have reported [*lower electricity costs*](#), contributing to overall operational savings
- Investing in Intel Core Ultra processors ensures long-term cost savings by [*reducing the need for frequent hardware upgrades*](#)

Businesses that delay migration risk higher IT expenses, security vulnerabilities, and lost productivity, making proactive upgrades the financially responsible choice in today's competitive landscape.

65%

[Less Time to Manage PCs with Intel vPro®](#)
(compared to devices with other platforms)

25%

[Faster Deployments](#)



The Last Minute Checklist: Future-Proof Your IT

How can you ensure a secure, efficient, and future-ready transition even if you've been unavoidably delayed or focused on other priorities?

Here's a quick checklist for your transition to Windows 11 Pro and Intel-based PCs before Windows 10 EOS on October 14, 2025. Hopefully it will spark ideas to ensure a smooth upgrade process.

- ✓ **Assess Current Hardware and Software**
Why? Some older devices may not meet Windows 11's system requirements, requiring upgrades.
- ✓ **Identify Critical Applications and Compatibility**
Why? Ensures that essential business software functions properly on Windows 11.
- ✓ **Develop a Migration Timeline**
Why? Avoids last-minute disruptions and ensures a smooth transition before EOS.
- ✓ **Train Employees on Windows 11 Features**
Why? Helps staff adapt quickly to new security and productivity tools.
- ✓ **Implement Extended Security Updates (ESU) if Needed**
Why? Provides temporary security patches for businesses unable to migrate immediately.
- ✓ **Strengthen Cybersecurity Measures**
Why? Windows 11 Pro offers enhanced security, but businesses should also update firewalls and endpoint protection to ensure comprehensive protection.
- ✓ **Backup Critical Data Before Migration**
Why? Prevents data loss during the transition.
- ✓ **Test Windows 11 Deployment on a Small Scale**
Why? Identifies potential issues before rolling out company-wide.
- ✓ **Ensure Compliance with Industry Regulations**
Why? Some industries require businesses to use supported software for security compliance.
- ✓ **Evaluate Cyber Insurance Policies**
Why? Running outdated systems can lead to higher premiums or denied claims.
- ✓ **Update IT Policies for AI Integration**
Why? AI-powered PCs require new security protocols and usage guidelines.
- ✓ **Communicate Changes to Employees and Customers**
Why? Keeps stakeholders informed and minimizes confusion.
- ✓ **Optimize Remote Work Capabilities**
Why? Windows 11 Pro enhances hybrid work environments with better security and collaboration tools.
- ✓ **Monitor Performance Post-Migration**
Why? Ensures that systems run efficiently and employees can work without disruptions.
- ✓ **Plan for Future Upgrades**
Why? Intel AI PCs are future-proof, but businesses should plan for long-term tech investments.
- ✓ **Engage IT Experts for Support**
Why? Professional guidance can streamline migration and reduce downtime.



Technology Sourcing: Optimizing Procurement with AI and Full Lifecycle Observability

How can you ensure a secure, efficient, and future-ready transition even if you've been procrastinating or focused on other priorities?

At Compucom, we specialize in empowering businesses to make their technology investments work smarter, not harder. By offering cutting-edge [procurement services](#) and [comprehensive device lifecycle management](#), we ensure your organization has the right tools at the right time, tailored to your specific needs.

From initial device procurement and configuration to the seamless retirement of outdated technology, we manage the full lifecycle with precision and efficiency, saving your team time and resources.

As a single-source technology provider, we bring many strategic advantages to your product procurement strategy – all with cost savings, more efficient logistics and inventory management, and a vendor-neutral approach – simplifying the sourcing process with AI-enhanced technology procurement services and providing:

- **Full Device Lifecycle Management:** From procurement and configuration to retirement.
- **Endpoint Rightsizing:** Align device specs to users' exact needs, reducing over-spending.
- **Actionable Analytics:** Predict future device and peripheral needs to avoid shortages and overstocking.

Our approach to endpoint rightsizing ensures every device matches user requirements without unnecessary overspending. Pair this with our [Full Lifecycle Observability](#) Framework, which delivers real-time insights to predict future device and peripheral needs, and you've got a foolproof strategy to avoid costly shortages or overstocking.

This forward-thinking methodology isn't just about buying computers – it's about creating a sustainable, results-driven strategy that aligns technology investments with your long-term business objectives.

We've cracked the code on aligning technology sourcing with long-term business goals because you're not just buying computers; you're boosting ROI and cutting waste.

Explore Intel-powered, AI-Driven Windows 11 Pro PCs

If your company has been holding off on planning, now is the time to take action – before rising costs make the transition even more expensive. Don't wait until it's too late. Upgrade to Intel-powered AI PCs with Windows 11 Pro and unlock the future of business computing.

Get started today with and make your migration planning and refresh seamless, secure, and smarter than ever.

